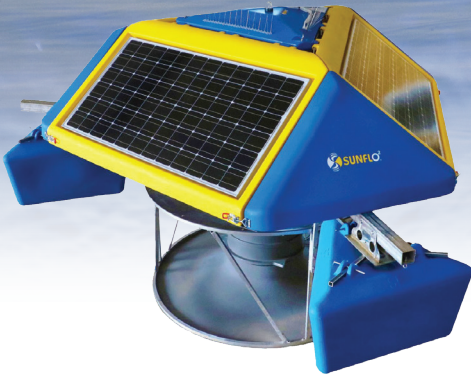




SHALLOW-FLO™

**SOLAR POWERED
MIXING & REAERATION**

SHALLOW-FLO™



**Uses solar power and Sunflo2 Technology to provide:
Re-oxygenation through surface renewal, water quality information, and performance data in ponds of limited depth from sun up to sun down.**

**Equipped With Insitu Probe That Monitors DO & Temperature.
(Other Parameters Available)**



BENEFITS

- Continuous recirculation of the top half of the pond.
- Non-turbulent laminar circulation increases MCRT (Mean Cell Residence Time).
- Real-time water quality monitoring and documentation.

APPLICATION

- Primary, secondary, tertiary and storage ponds.
- Storm water ponds, evaporation or cooling ponds.
- Shallow lakes or reservoirs.
- Used for ponds up to 9 ft. deep.

**For Ponds
9 ft. - 45 ft.
Sunflo2 Offers
the DEEP-FLO™
Unit!**



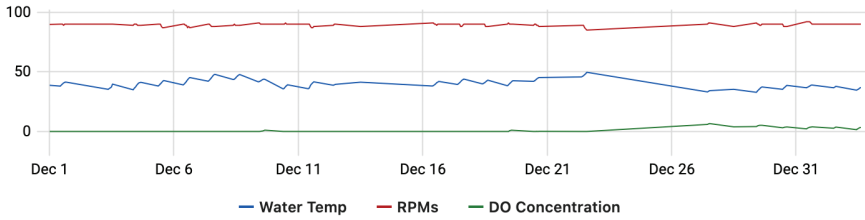
701.734.7663

REAL TIME MONITORING

Real time Daily, Weekly or Monthly Reporting

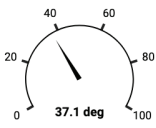
Pond History

For selected time period



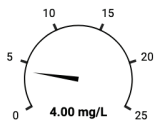
Water Temperature

Degrees F



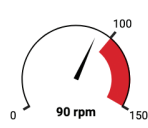
DO Concentration

mg/L



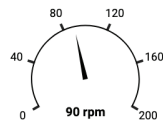
Impeller Speed

RPMs



Average Speed

Last hour



← Haviland, KS ☆

Today ↻

Monitoring

Select a Date Range
from Real-Time to
Historic Data to Track
Water Quality.

Click to Download a CSV
File of Data Into Excel for
the Selected Time Period.

History Download



Pond History

For selected time period



Water Temperature

Degrees F



Time range selection

Dec 2023

Mon	Tue	Wed	Thu	Fri	Sat	Sun
27	28	29	30	1	2	3
4	5	6	7	8	9	10
11	12	13	14	15	16	17
18	19	20	21	22	23	24
25	26	27	28	29	30	31

From *
12/1/2023, 12:00:00 AM

Jan 2024

Mon	Tue	Wed	Thu	Fri	Sat	Sun
25	26	27	28	29	30	31
1	2	3	4	5	6	7
8	9	10	11	12	13	14
15	16	17	18	19	20	21
22	23	24	25	26	27	28

To *
1/2/2024, 11:59:59 PM

Cancel

Apply

Last hour

Last 3 hours

Last 6 hours

Last 12 hours

Last 24 hours

Last 2 days from today

Last 2 days from yesterday

Last 7 days from today

Last 7 days from yesterday

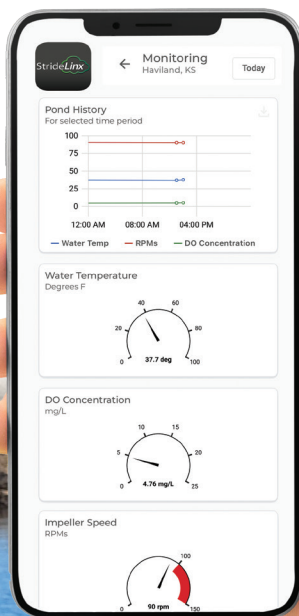
Last 30 days from today

Last 30 days from yesterday

Today

StrideLinX

**STRIDELINX
TECHNOLOGY AT
YOUR FINGERTIPS!**



www.sunflo2.com



**31700 Highway 1804
Wilton, ND 58579
info@sunflo2.com
701.734.7663**



www.sunflo2.com